

# RX WIZARD Installation

Go to [www.empireoptical.org](http://www.empireoptical.org) and follow links

EMPIRE OPTICAL.org

**EMPIRE**  
Optical, Inc.

Home Company Products News/Promotions Seminars/Training **Lens Resources** Contact Us Login

Downloads  
Job Tracking  
Optical Dictionary  
RX Wizard  
Eyefinity for VSP

ABOUT RX WIZARD

ENTER EYEFINITY FOR VSP WORK

NOW AVAILABLE ONLINE  
**INVOICES / CREDIT MEMOS**

Click to receive monthly statements by email

**The Premium Lab of Choice**

Pay Online  
**EMPIRE**  
Optical, Inc.

What's New?  
Updated contact info

**HIGHLIGHT** Lens Resources  
and **CLICK** on Downloads

or go to <http://www.empireoptical.org/downloads.htm> in your address

EMPIRE OPTICAL.org

**EMPIRE**  
Optical, Inc.

Home Company Products News/Promotions Seminars/Training Lens Resources Contact Us Login

**DOWNLOADS**

**Lens Information**

- [ANSI Z80.1-2005 Prescription Ophthalmic Lenses \(PDF\)](#)
- [AR Coating Technology \(PDF\)](#)
- [Aspheric Lens Design \(PDF\)](#)
- [Carat Advantage Approved Lens List \(PDF\) 9/2008](#)
- [CR-39 Base Curve Chart \(PDF\)](#)
- [Crizal Availability Chart \(PDF\) 2/2009](#)
- [Drill Mount Recommendations \(PDF\)](#)
- [DVI Remo Help Tips \(PDF\)](#)

**Promotions**

- [2011 Promotions Enrollment Form \*new\*](#)
- [2011 Premium Points Award Request Form \*new\*](#)
- [W-9 Form](#)

**Programs**

- [Empire Remote Ordering Program \(DVI RX Wizard\) Version 6.12](#)

DVI RxWizard (also known as DVI Remo) is a program for ordering Empire products online. Download only if you

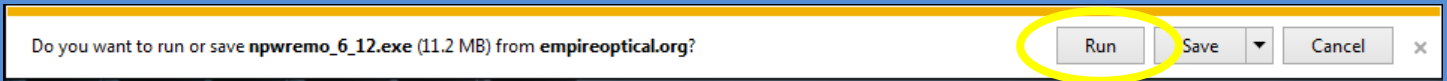
Click link highlighted above

**CHOOSE ONE OF THE THREE BROWSERS BELOW TO HELP DOWNLOAD INSTRUCTIONS**

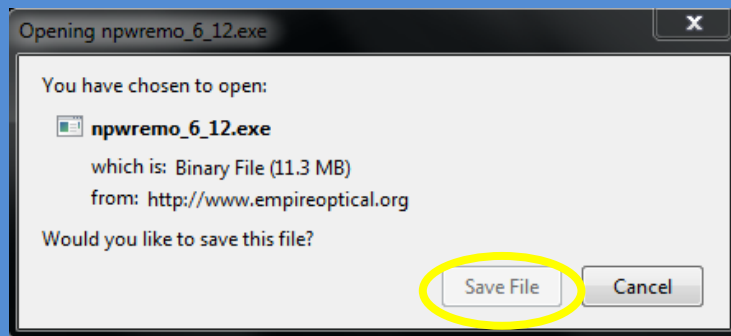
## #1. INTERNET EXPLORER Users Only



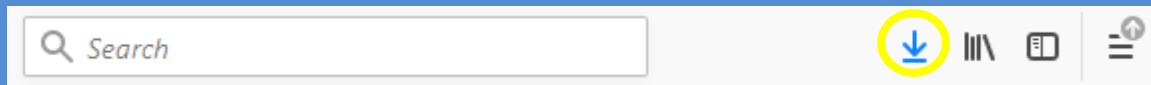
CLICK "run" or "open" to begin install



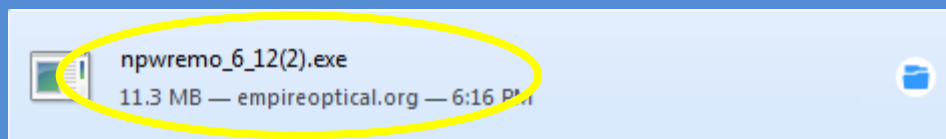
## #2. FIREFOX Users Only



CLICK to save



CLICK on Download Arrow to access file

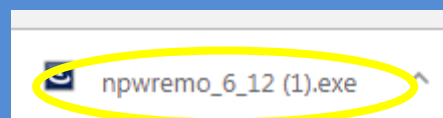


CLICK on file to start install

## #3. GOOGLE CHROME Users Only



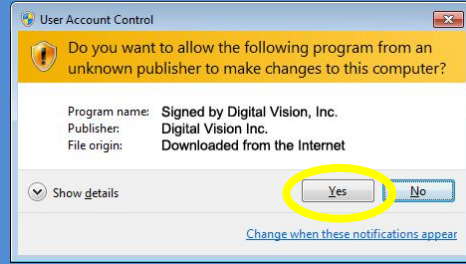
Download begins after CLICK at bottom of screen



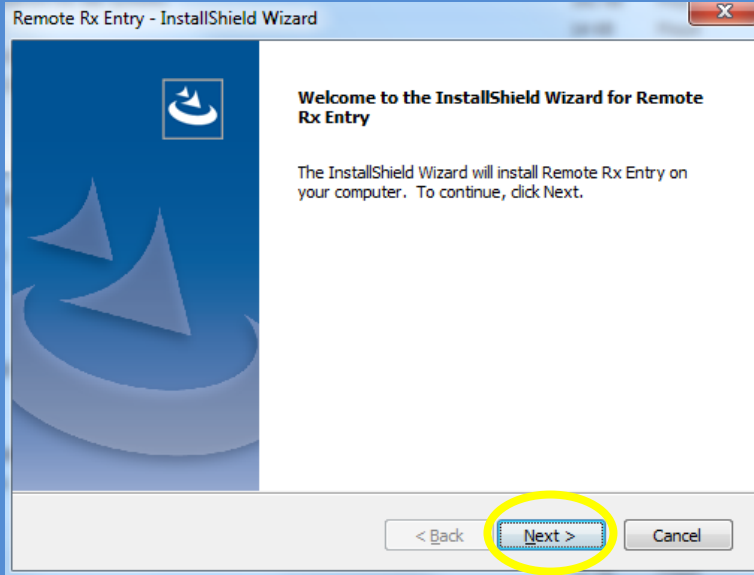
CLICK on file to begin install

From this point the Install Screen begins.

You will be prompted by your computer to allow the install



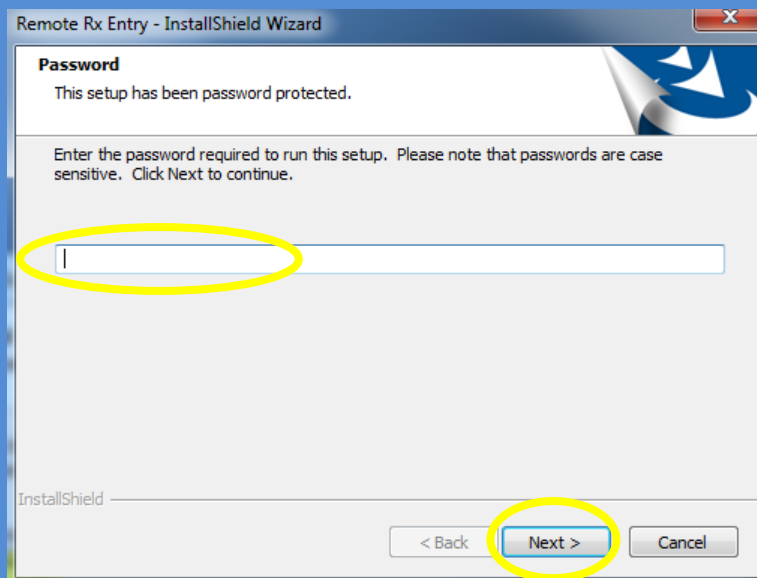
CLICK to allow it to install

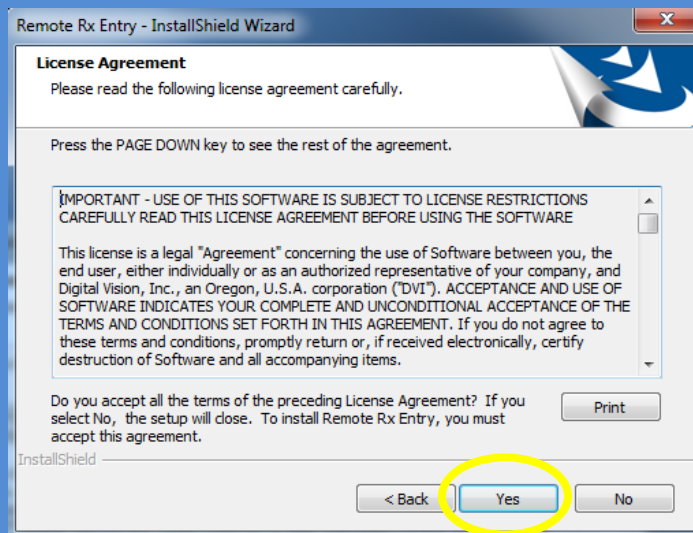


Install is typical and the Password is slaboff to allow the install.

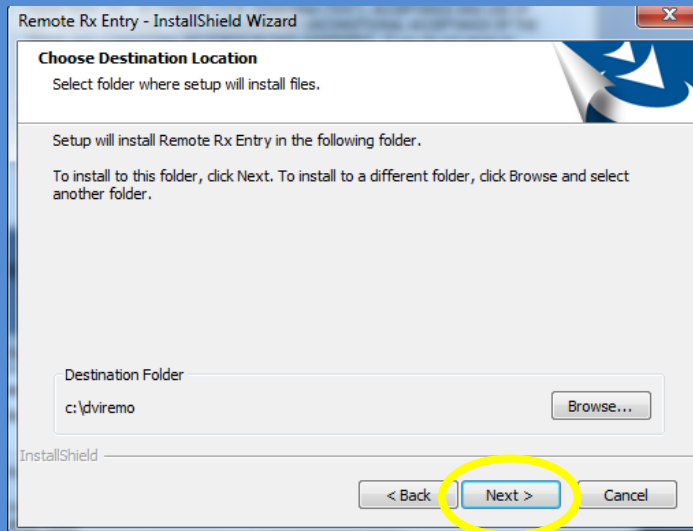
"slaboff" is lowercase & all one word.

Type in password and **CLICK** next

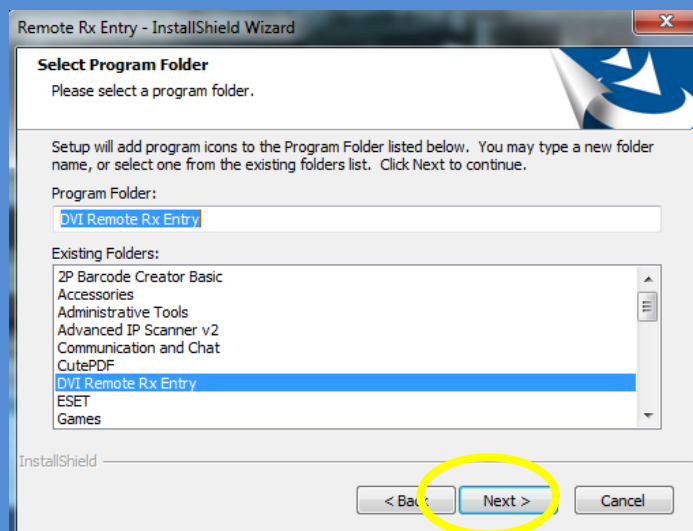




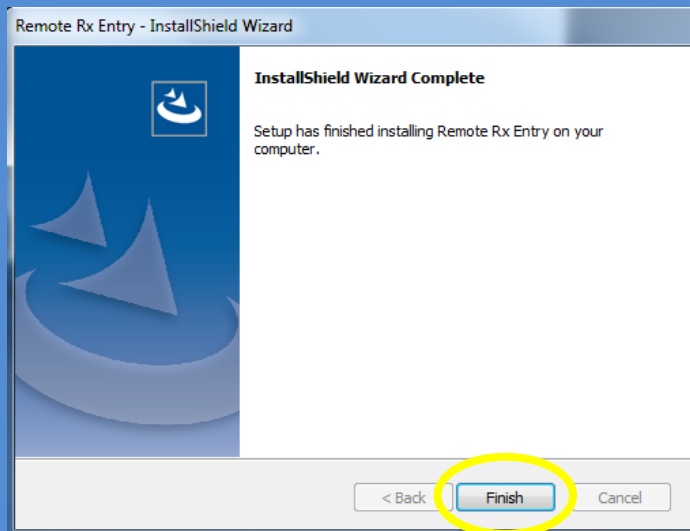
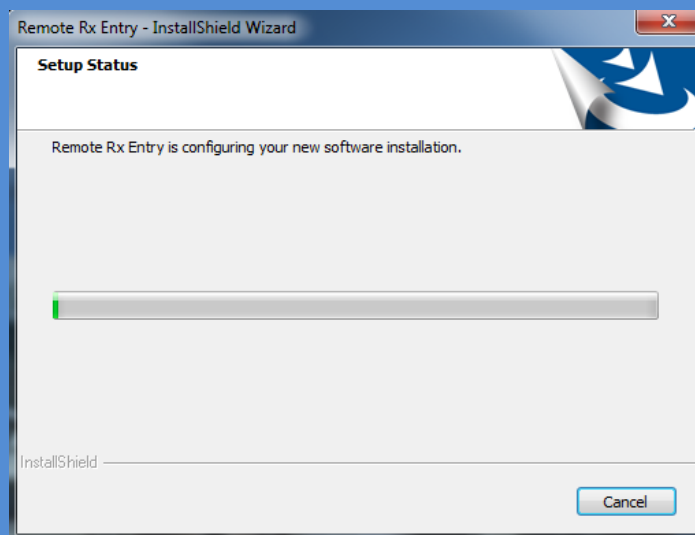
Agree to License **CLICK** yes to continue



Change directory if needed, but Empire recommends letting the program install where selects.



Select Program Folder **CLICK** next to continue



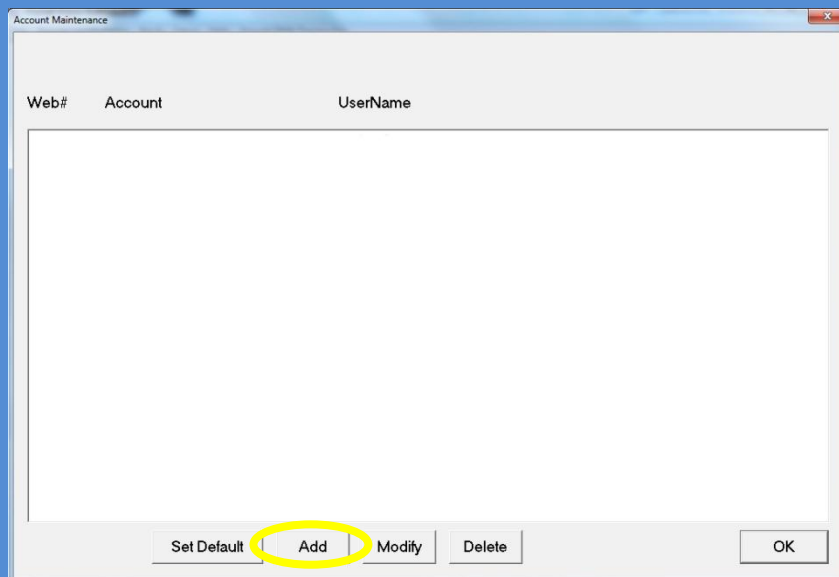
When it says installation complete you can close it and close your web browser as well.



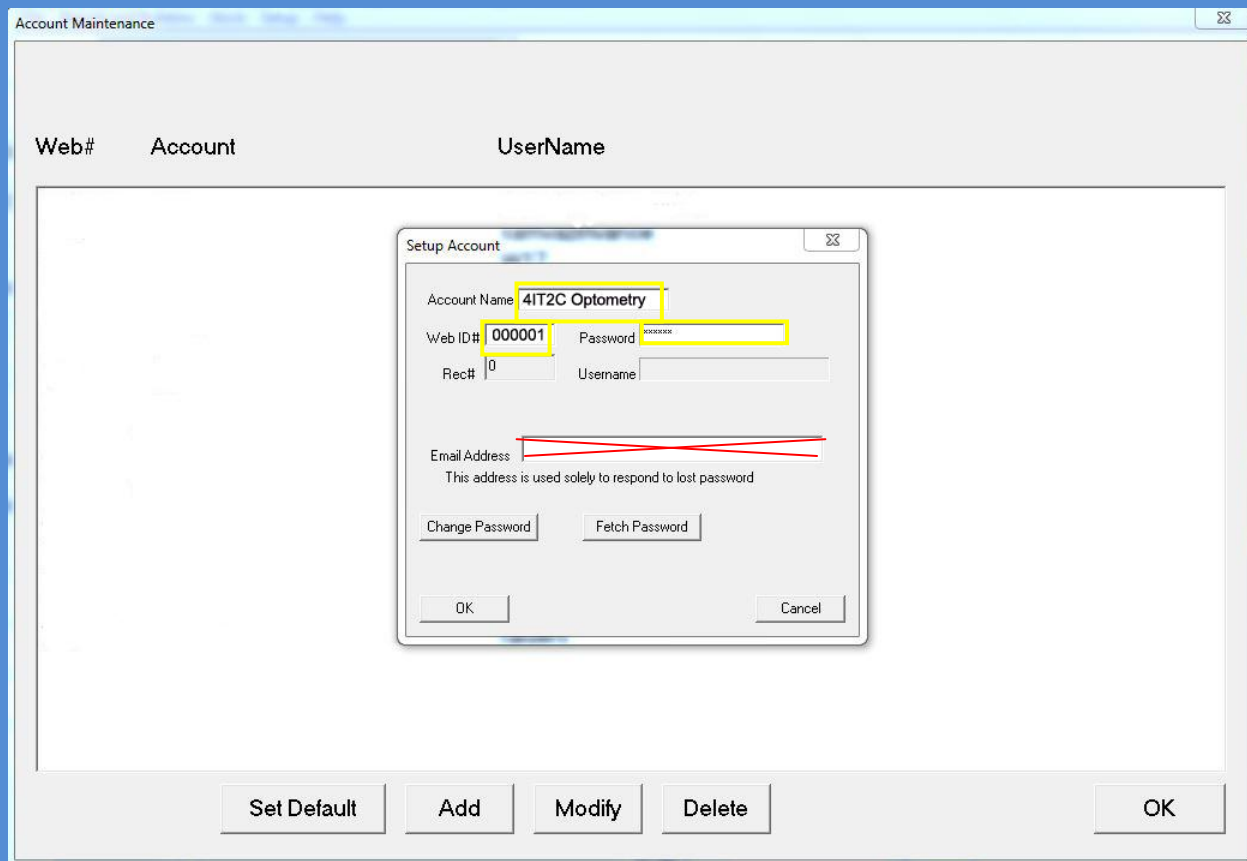
You should find the RX Wizard on your desktop.  
**CLICK** on the icon to open



From the Account Maintenance screen you will need to **CLICK ADD** at the bottom of the ACCOUNT MAINTENANCE screen.

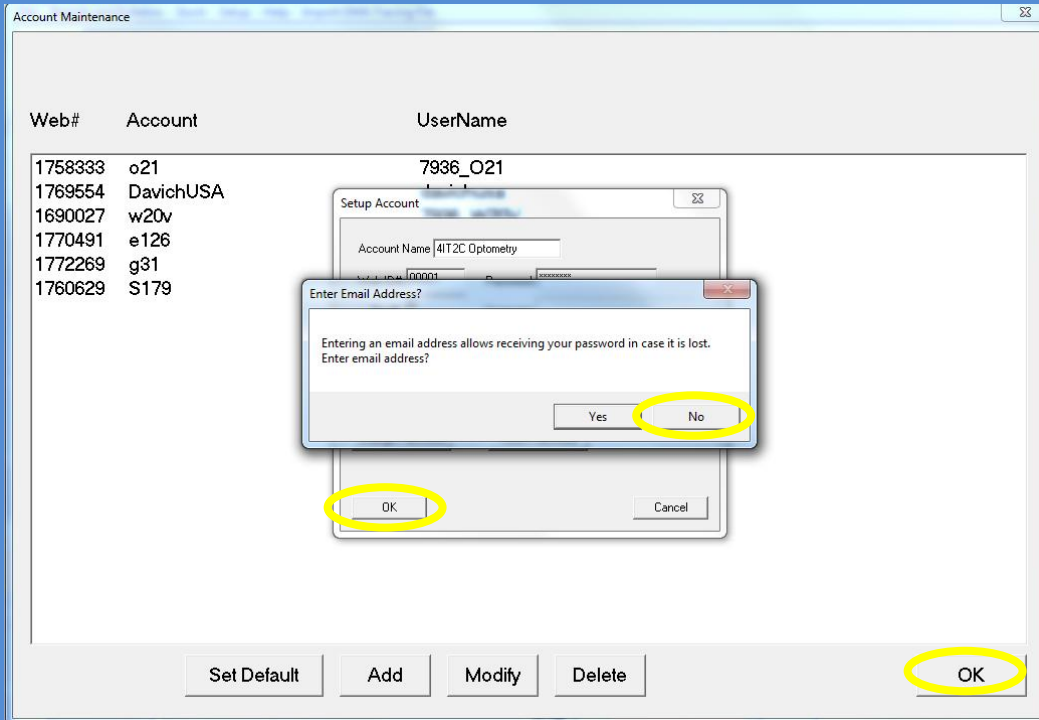


This opens the SETUP ACCOUNT WINDOW. Put in your Account Name. This is what will print on your RX Forms and Packing Slips so keep that in mind when choosing how you want it to appear. The Web ID# and Password what will log you to the online system to send work and check status on jobs already in the system so this will be supplied by the lab.

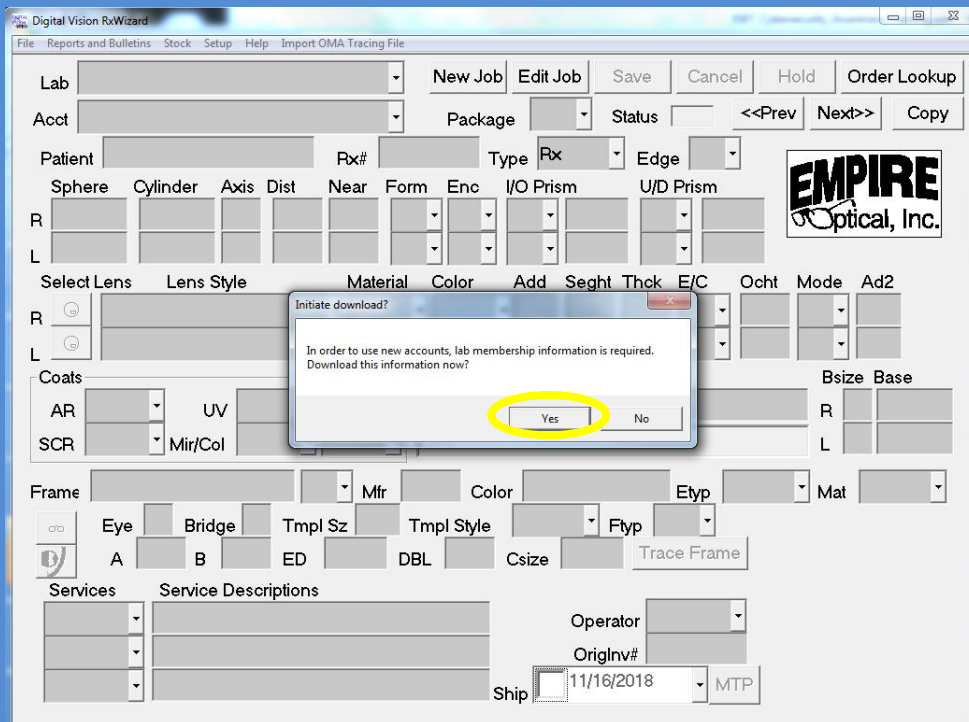


Please do not enter your email address. If you choose too we can no longer retrieve lost passwords for you.

Enter an email address: CLICK No and CLICK OK at bottom left of the Setup Account window, then CLICK OK at bottom right of Account Maintenance Screen.

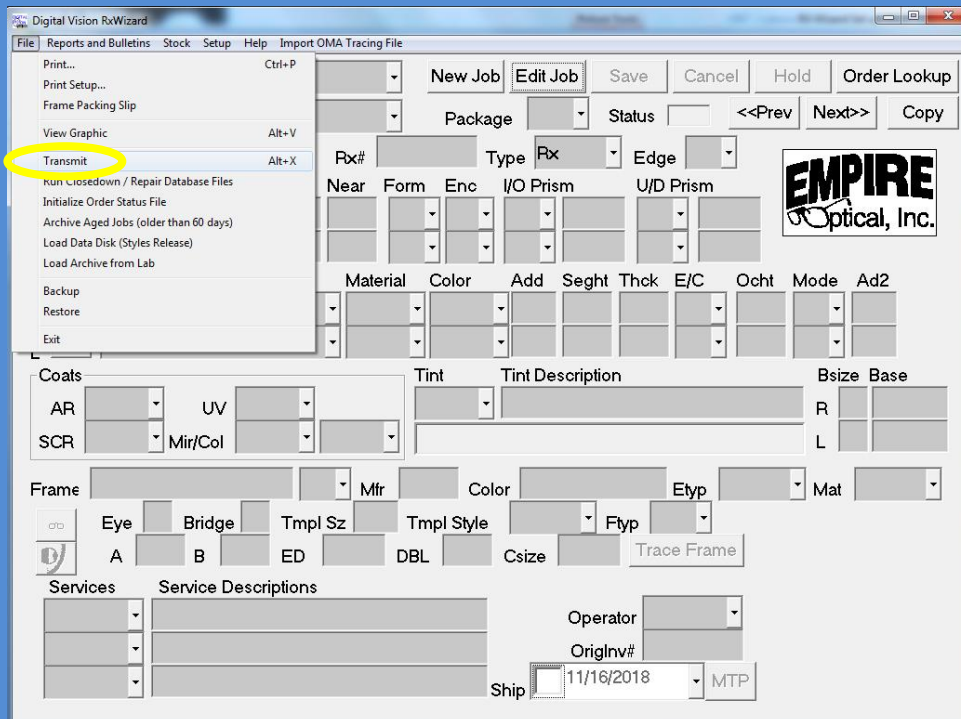


After hitting OK you will be prompted to download lab information, if successful you will also receive a program update. Allow it to update, the program will be constantly updating in the future and the newest version will be downloaded when you transmit jobs.





If for some reason your id or password is incorrect after you fix this you will need to manually connect by hitting the transmit button. This is also how you send work after saving it.



If we've done it correctly you will see our logo and be able to hit new job.

Thank You for your business and please if you need any help setting up Wizard or any other optical need please contact

Floyd@EmpireOptical.org

1-800-767-6784

7633 Varna Ave

North Hollywood CA 91605